

FACC Operations GmbH

Fischerstrasse 9,

A-4910 Ried im Innkreis, Austria

SERVICE BULLETIN

SUBJECT/TITLE:

E190-57-0035 Wings-Flap Track Fairing-Lip Seals

REVISION RECORD

| REVISION | DATE | PAGE | CHANGES |
|----------|------------|------|-----------------|
| NC | 07.04.2020 | All | Initial Release |
| | | | |
| | | | |
| | | | |

This document supersedes all previous revisions.

All earlier publications of this document are invalid and must be eliminated immediately!

PROPRIETARY

This document contains information which is proprietary to FACC.

Any reproduction, disclosure or use of this information, without FACC's prior written consent, is expressly prohibited!

1. EFFECTIVITY

The MSN relationship is provided for information only and is correct at the time of issue in accordance with the information available to FACC.

| MSN |
|---|
| All E190/E195 with the PNs 190-92766-901, 190-92766-902, 190-92767-901, 190-92767-902, 190-92768-901, 190-92768-902 installed |

2. REASON FOR THIS SERVICE BULLETIN

Replacement instruction of the existing E1 Flap Track Fairing Lip Seals with the improved FACC E1 Flap Track Fairing Lip Seals.

Meantime between unscheduled removals has been significantly improved due to the new seal material used, which was changed from silicone to polyurethane and the new layup design which improves the erosion resistance of the seals.

3. DESCRIPTION

This Service Bulletin details the work necessary to replace the existing E1 Flap Track Fairing Lip Seals and the installation of improved E1 Flap Track Fairing Lip Seals.

This Service Bulletin also details the necessary adjustments to the improved E1 Flap Track Fairing Lip Seals.

4. APPROVAL

The technical information contained in this document relates to the Basic Type Design and to the Change Design Order CDO_1_0008_18-1495 which has been approved under the authority of DOA EASA.21J.276.

THE TECHNICAL CONTENT OF THIS DOCUMENT IS APPROVED UNDER THE AUTHORITY OF THE DOA EASA.21J.276.

5. CONCURRENT REQUIREMENTS

Not applicable

6. COMPLIANCE

The actions in this Service Bulletin are classed as "Optional".

The implementation of this Service Bulletin is not mandatory and can be accomplished at the next scheduled maintenance.

The accomplishment of the SB has no influence on weight, balance, structural strength, flight characteristics, etc. thus partial compliance in accordance with the accomplishment instructions within this SB (e.g.: individual E1 Flap Track Fairing Lip Seal exchange) is possible.

7. MANPOWER

Time for the exchange of all six E1 Flap Track Fairing Lip Seals, excluding sealant cure time:

| | |
|------------|------------|
| ELT: 5,27h | MMH: 5,27h |
|------------|------------|

8. WEIGHT AND BALANCE

Not Applicable.

9. ELECTRICAL LOAD DATA

Not Applicable.

10. SOFTWARE ACCOMPLISHMENT SUMMARY

Not Changed.

11. REFERENCES

| REFERENCE | SPECIFICATION |
|-----------------------------------|-----------------|
| Product Support Plan | Doc.No. 20/0634 |
| Aircraft Maintenance Manual (AMM) | 57-58-23 |
| Aircraft Maintenance Manual (AMM) | 57-58-25 |
| Illustrated Parts Catalogue (IPC) | 57-58-00 |

12. OTHER PUBLICATIONS AFFECTED

| REFERENCE | SPECIFICATION |
|-----------------------------------|---------------|
| Aircraft Maintenance Manual (AMM) | 57-58-23 |
| Aircraft Maintenance Manual (AMM) | 57-58-25 |

13. INTERCHANGEABILITY OR INTERMIXABILITY OF PARTS

| DESCRIPTION | OLD P/N | NEW P/N/ ITEMNBR | INTERCHANGE ABILITY | MIXABILITY |
|-------------------|---------------|---------------------|------------------------|----------------|
| Lip seal FFTF 2LH | 190-92766-901 | 190-60210-201 | 01 | Not Applicable |
| Lip seal FFTF 3LH | 190-92767-901 | 190-60310-201 | 01 | Not Applicable |
| Lip seal FFTF 4LH | 190-92768-901 | 190-60410-201 | 01 | Not Applicable |
| Lip seal FFTF 2RH | 190-92766-902 | 190-60210-202 | 01 | Not Applicable |
| Lip seal FFTF 3RH | 190-92767-902 | 190-60310-202 | 01 | Not Applicable |
| Lip seal FFTF 4RH | 190-92768-902 | 190-60410-202 | 01 | Not Applicable |

14. MATERIAL – PRICE AVAILABILITY

| DESCRIPTION | PARTS KIT (P/N) | PRICE (\$) |
|--------------------------|-----------------|------------|
| Pair of Lip Seals FFTF 2 | 190-60210-200 | On request |
| Pair of Lip Seals FFTF 3 | 190-60310-200 | On request |
| Pair of Lip Seals FFTF 4 | 190-60410-200 | On request |

15. INDUSTRY SUPPORT INFORMATION

None.

16. MATERIAL NECESSARY FOR EACH AIRCRAFT

16.1. Supplier furnished equipment (SFE):

Material to be purchased: 190-60210-200, 190-60310-200, 190-60410-200 (Retrofit Kits)

| ITEM | PARTNUMBER | QTY | DESCRIPTION | ADDITIONAL NOTES |
|------|---------------|-----|-------------------|---------------------|
| 1 | 190-60210-201 | 1 | Lip seal FFTF 2LH | |
| 2 | 190-60210-202 | 1 | Lip seal FFTF 2RH | |
| 3 | 190-60310-201 | 1 | Lip seal FFTF 3LH | |
| 4 | 190-60310-202 | 1 | Lip seal FFTF 3RH | |
| 5 | 190-60410-201 | 1 | Lip seal FFTF 4LH | |
| 6 | 190-60410-202 | 1 | Lip seal FFTF 4RH | |

16.2. Buyer furnished equipment (BFE):

| DESIGNATION | P/N | Alternative P/N | QTY |
|-------------|---------------|-----------------|-----|
| Screw | PE21101-3-4TA | | 76 |
| Washer | NAS1149C0363R | AN960C10 | 76 |
| Nut | NAS1291C3M | BH1291C3M | 76 |
| | | H42-3 | 76 |
| | | PLH-53M | 76 |
| | | P32333 | 76 |
| Retainer | 190-92484-001 | | 1 |
| Retainer | 190-92484-002 | | 1 |
| Retainer | 190-92485-001 | | 4 |
| Retainer | 190-92562-001 | | 1 |
| Retainer | 190-92562-002 | | 1 |
| Retainer | 190-92563-001 | | 2 |
| Retainer | 190-92564-001 | | 2 |
| Retainer | 190-92627-001 | | 1 |
| Retainer | 190-92627-002 | | 1 |
| Retainer | 190-92628-001 | | 4 |

17. MATERIAL NECESSARY FOR EACH SPARE

| DESCRIPTION | REFERENCE | QTY | ADDITIONAL NOTES |
|----------------------------|-----------|-------------|-------------------|
| TEXTILE - LINT FREE COTTON | None | As required | Locally Available |
| ISOPROPYLE ALCOHOL | None | As required | Locally Available |

18. REIDENTIFIED PARTS

Not applicable

19. TOOLING – PRICE AND AVAILABILTY

Not applicable

20. ACCOMPLISHMENT INSTRUCTIONS

20.1. GENERAL

All the working steps have to be executed by qualified personal in an adequate shop floor to meet the standards necessary for airworthiness.

20.2. EFFECTIVITY

The procedures are applicable for the E190/E195 Aircrafts listed in Chapter 1 EFFECTIVITY.

20.3. REWORK OF THE E1 FLAP TRACK FAIRING LIP SEALS

1. Removal of the old Lip seal FFTF 2LH/RH:

- a. Remove the LIP SEALS FFTF 2 (190-92766-901), (190-92766-902) from the TRACK FAIRING ASSY. Refer to AMM TASK 57-58-23-000-801-A.

NOTE: Retain the SCREWS (PE21101-3-4TA) and the WASHERS (NAS1149C0363R), the NUTS (NAS1291C3M) and the RETAINERS (190-92484-001), (190-92484-002), (190-92485-001) for installation of the new LIP SEALS FFTF 2 (1), (2).

WARNING: BEFORE YOU USE CHEMICALS, READ, UNDERSTAND, AND OBEY ALL SAFETY INSTRUCTIONS FOR THE CHEMICALS. THESE INSTRUCTIONS INCLUDE INSTRUCTIONS FROM THE MANUFACTURER, THE MATERIAL SAFETY DATA SHEET (MSDS), AND GOVERNMENT REGULATIONS. CHEMICALS CAN CAUSE INJURY TO YOU OR MAKE YOU SICK WHEN SAFETY INSTRUCTIONS ARE NOT OBEYED. AN MSDS GIVES INSTRUCTIONS ON HOW YOU MUST SAFELY USE, KEEP, AND DISCARD CHEMICALS. GET INSTRUCTIONS FROM YOUR EMPLOYER ON HOW YOU MUST SAFELY USE, KEEP, AND DISCARD CHEMICALS.

WARNING: PUT ON PROTECTIVE CLOTHING AND THE APPROVED HAND AND EYE PROTECTION WHEN YOU APPLY CHEMICALS. USE ONLY IN AN AREA WITH A GOOD SUPPLY OF AIR. BEFORE USE, READ THE APPLICABLE MATERIAL SAFETY DATA SHEET AND FOLLOW ALL SAFETY AND HEALTH PRECAUTIONS.

CAUTION: DO NOT LET THE SURFACE DRY BY SOLVENT EVAPORATION.

CAUTION: AFTER YOU HAVE CLEANED THE PART, WEAR CLEAN RUBBER GLOVES WHEN YOU TOUCH IT. IF YOU DO NOT WEAR CLEAN RUBBER GLOVES THIS CAN CAUSE CORROSION ON THE COMPONENTS.

CAUTION: MAKE SURE THAT DURING CLEANING NO LIQUIDS GO THROUGH THE HOLES INTO THE BOND ASSEMBLY. LIQUIDS, WHICH GO THROUGH THE HOLES WILL DAMAGE THE BOND ASSEMBLY.

CAUTION: USE ONLY SPECIFIED MATERIALS, OR THEIR EQUIVALENTS. THE SURFACE PROTECTION CAN BE DAMAGED IF DIFFERENT MATERIALS ARE USED.

- b. Clean the contact areas of the TRACK FAIRING ASSY and the LIP SEALS FFTF 2 (190-92766-901), (190-92766-902) with a Textile - Lint free Cotton, moistened with Isopropyl Alcohol.
- c. Use a clean, dry Textile - Lint free Cotton and dry the contact areas of the TRACK FAIRING ASSY and the LIP SEALS FFTF 2 (190-92766-901), (190-92766-902) before the Isopropyl Alcohol becomes gas.

2. Removal of the old Lip seal FFTF 3LH/RH:

- a. Remove the LIP SEAL FFTF 3 (190-92767-901), (190-92767-902) from the TRACK FAIRING ASSY. Refer to AMM TASK 57-58-25-000-801-A.

NOTE: Retain the SCREWS (PE21101-3-4TA) and the WASHERS (NAS1149C0363R), the NUTS (NAS1291C3M) and the RETAINERS (190-92562-001), (190-92562-002), (190-92563-001), (190-92564-001) for installation of the new LIP SEALS FFTF 3 (3), (4).

WARNING: BEFORE YOU USE CHEMICALS, READ, UNDERSTAND, AND OBEY ALL SAFETY INSTRUCTIONS FOR THE CHEMICALS. THESE INSTRUCTIONS INCLUDE INSTRUCTIONS FROM THE MANUFACTURER, THE MATERIAL SAFETY DATA SHEET (MSDS), AND GOVERNMENT REGULATIONS. CHEMICALS CAN CAUSE INJURY TO YOU OR MAKE YOU SICK WHEN SAFETY INSTRUCTIONS ARE NOT OBEYED. AN MSDS GIVES INSTRUCTIONS ON HOW YOU MUST SAFELY USE, KEEP, AND DISCARD CHEMICALS. GET INSTRUCTIONS FROM YOUR EMPLOYER ON HOW YOU MUST SAFELY USE, KEEP, AND DISCARD CHEMICALS.

WARNING: PUT ON PROTECTIVE CLOTHING AND THE APPROVED HAND AND EYE PROTECTION WHEN YOU APPLY CHEMICALS. USE ONLY IN AN AREA WITH A GOOD SUPPLY OF AIR. BEFORE USE, READ THE APPLICABLE MATERIAL SAFETY DATA SHEET AND FOLLOW ALL SAFETY AND HEALTH PRECAUTIONS.

CAUTION: DO NOT LET THE SURFACE DRY BY SOLVENT EVAPORATION.

CAUTION: AFTER YOU HAVE CLEANED THE PART, WEAR CLEAN RUBBER GLOVES WHEN YOU TOUCH IT. IF YOU DO NOT WEAR CLEAN RUBBER GLOVES THIS CAN CAUSE CORROSION ON THE COMPONENTS.

CAUTION: MAKE SURE THAT DURING CLEANING NO LIQUIDS GO THROUGH THE HOLES INTO THE BOND ASSEMBLY. LIQUIDS, WHICH GO THROUGH THE HOLES WILL DAMAGE THE BOND ASSEMBLY.

CAUTION: USE ONLY SPECIFIED MATERIALS, OR THEIR EQUIVALENTS. THE SURFACE PROTECTION CAN BE DAMAGED IF DIFFERENT MATERIALS ARE USED.

- b. Clean the contact areas of the TRACK FAIRING ASSY and the LIP SEALS FFTF 3 (190-92767-901), (190-92767-902) with a Textile - Lint free Cotton, moistened with Isopropyl Alcohol.

- c. Use a clean, dry Textile - Lint free Cotton and dry the contact areas of the TRACK FAIRING ASSY and the LIP SEALS FFTF 3 (190-92767-901), (190-92767-902) before the Isopropyl Alcohol becomes gas.

3. Removal of the old Lip seal FFTF 4LH/RH:

- a. Remove the LIP SEAL FFTF 4 (190-92768-901), (190-92768-902) from the TRACK FAIRING ASSY. Refer to AMM TASK 57-58-25-000-801-A.

NOTE: Retain the SCREWS (PE21101-3-4TA) and the WASHERS (NAS1149C0363R), the NUTS (NAS1291C3M) and the RETAINERS (190-92627-001), (190-92627-002), (190-92628-001) for installation of the new LIP SEALS FFTF 4 (5), (6).

WARNING: BEFORE YOU USE CHEMICALS, READ, UNDERSTAND, AND OBEY ALL SAFETY INSTRUCTIONS FOR THE CHEMICALS. THESE INSTRUCTIONS INCLUDE INSTRUCTIONS FROM THE MANUFACTURER, THE MATERIAL SAFETY DATA SHEET (MSDS), AND GOVERNMENT REGULATIONS. CHEMICALS CAN CAUSE INJURY TO YOU OR MAKE YOU SICK WHEN SAFETY INSTRUCTIONS ARE NOT OBEYED. AN MSDS GIVES INSTRUCTIONS ON HOW YOU MUST SAFELY USE, KEEP, AND DISCARD CHEMICALS. GET INSTRUCTIONS FROM YOUR EMPLOYER ON HOW YOU MUST SAFELY USE, KEEP, AND DISCARD CHEMICALS.

WARNING: PUT ON PROTECTIVE CLOTHING AND THE APPROVED HAND AND EYE PROTECTION WHEN YOU APPLY CHEMICALS. USE ONLY IN AN AREA WITH A GOOD SUPPLY OF AIR. BEFORE USE, READ THE APPLICABLE MATERIAL SAFETY DATA SHEET AND FOLLOW ALL SAFETY AND HEALTH PRECAUTIONS.

CAUTION: DO NOT LET THE SURFACE DRY BY SOLVENT EVAPORATION.

CAUTION: AFTER YOU HAVE CLEANED THE PART, WEAR CLEAN RUBBER GLOVES WHEN YOU TOUCH IT. IF YOU DO NOT WEAR CLEAN RUBBER GLOVES THIS CAN CAUSE CORROSION ON THE COMPONENTS.

CAUTION: MAKE SURE THAT DURING CLEANING NO LIQUIDS GO THROUGH THE HOLES INTO THE BOND ASSEMBLY. LIQUIDS, WHICH GO THROUGH THE HOLES WILL DAMAGE THE BOND ASSEMBLY.

CAUTION: USE ONLY SPECIFIED MATERIALS, OR THEIR EQUIVALENTS. THE SURFACE PROTECTION CAN BE DAMAGED IF DIFFERENT MATERIALS ARE USED.

- b. Clean the contact areas of the TRACK FAIRING ASSY and the LIP SEALS FFTF 4 (190-92768-901), (190-92768-902) with a Textile - Lint free Cotton, moistened with Isopropyl Alcohol.
- c. Use a clean, dry Textile - Lint free Cotton and dry the contact areas of the TRACK FAIRING ASSY and the LIP SEALS FFTF 4 (190-92768-901), (190-92768-902) before the Isopropyl Alcohol becomes gas.

4. Installation of the new Lip seal FFTF 2LH/RH:

WARNING: BEFORE YOU USE CHEMICALS, READ, UNDERSTAND, AND OBEY ALL SAFETY INSTRUCTIONS FOR THE CHEMICALS. THESE INSTRUCTIONS INCLUDE INSTRUCTIONS FROM THE MANUFACTURER, THE MATERIAL SAFETY DATA SHEET (MSDS), AND GOVERNMENT REGULATIONS. CHEMICALS CAN CAUSE INJURY TO YOU OR MAKE YOU SICK WHEN SAFETY INSTRUCTIONS ARE NOT OBEYED. AN MSDS GIVES INSTRUCTIONS ON HOW YOU MUST SAFELY USE, KEEP, AND DISCARD CHEMICALS. GET INSTRUCTIONS FROM YOUR EMPLOYER ON HOW YOU MUST SAFELY USE, KEEP, AND DISCARD CHEMICALS.

WARNING: PUT ON PROTECTIVE CLOTHING AND THE APPROVED HAND AND EYE PROTECTION WHEN YOU APPLY CHEMICALS. USE ONLY IN AN AREA WITH A GOOD SUPPLY OF AIR. BEFORE USE, READ THE APPLICABLE MATERIAL SAFETY DATA SHEET AND FOLLOW ALL SAFETY AND HEALTH PRECAUTIONS.

CAUTION: DO NOT LET THE SURFACE DRY BY SOLVENT EVAPORATION.

CAUTION: AFTER YOU HAVE CLEANED THE PART, WEAR CLEAN RUBBER GLOVES WHEN YOU TOUCH IT. IF YOU DO NOT WEAR CLEAN RUBBER GLOVES THIS CAN CAUSE CORROSION ON THE COMPONENTS.

CAUTION: MAKE SURE THAT DURING CLEANING NO LIQUIDS GO THROUGH THE HOLES INTO THE BOND ASSEMBLY. LIQUIDS, WHICH GO THROUGH THE HOLES WILL DAMAGE THE BOND ASSEMBLY.

CAUTION: USE ONLY SPECIFIED MATERIALS, OR THEIR EQUIVALENTS. THE SURFACE PROTECTION CAN BE DAMAGED IF DIFFERENT MATERIALS ARE USED.

- a. Clean the LIP SEALS FFTF 2 (1), (2) with a Textile - Lint free Cotton, moistened with Isopropyl Alcohol.
- b. Use a clean, dry Textile - Lint free Cotton and dry the LIP SEALS FFTF 2 (1), (2) before the Isopropyl Alcohol becomes gas.
- c. Adjustment of the LIP SEALS FFTF 2 (1), (2). Refer to **Figure 3**:
 - i. Put the LIP SEALS FFTF 2 (1), (2) to the TRACK FAIRING ASSY.
 - ii. Install the LIP SEALS FFTF 2 (1), (2) temporary to the TRACK FAIRING ASSY with the RETAINERS (190-92484-001), (190-92485-001), (190-92485-001), the SCREWS (PE21101-3-4TA), the WASHERS (NAS1149C0363R) and the NUTS (NAS1291C3M).
 - iii. Torque the SCREWS (PE21101-3-4TA) finger tight.
 - iv. Check and measure the fit of the LIP SEALS FFTF 2 (1), (2). Refer to **Figure 3**.
 - v. Mark the correct trim on the LIP SEALS FFTF 2 (1), (2) using a pen - felt. Obey the specified clearances (refer to **Figure 3**).

- vi. Remove the LIP SEALS FFTF 2 (1), (2).
 - vii. Put the LIP SEALS FFTF 2 (1), (2) on a flat surface.
 - viii. Cut the seal on the marked surface with a knife - sharp.
 - ix. Check the fit of the trimmed LIP SEALS FFTF 2 (1), (2) by repeating steps 4.c.i - iv. Refer to **Figure 3**.
 - x. If the fit is satisfactory, continue with LIP SEAL installation (refer to 4.d).
 - xi. If the fit is not satisfactory:
 - 1. Repeat steps 4.c.v - ix if the trimmed LIP SEALS FFTF 2 (1), (2) are still within the specified clearances .Refer to **Figure 3**.
 - 2. Replace the trimmed LIP SEALS FFTF 2 (1), (2) if they are not within the specified clearances. Refer to **Figure 3**.
- d. Install the LIP SEALS FFTF 2 (1), (2):
- i. Put the LIP SEALS FFTF 2 (1), (2) in position on the TRACK FAIRING ASSY.
 - ii. Install the LIP SEALS FFTF 2 (1), (2) and the RETAINERS (190-92484-001), (190-92485-001), (190-92485-001) with the SCREWS (PE21101-3-4TA), the WASHERS (NAS1149C0363R) and the NUTS (NAS1291C3M).
 - iii. Torque the SCREWS (PE21101-3-4TA) to 1.7 to 3.4 Nm (15 to 30 lb.in) plus the drag torque of 0.23 to 1.5 Nm (2 to 13 lb.in).

5. Installation of the new Lip seal FFTF 3LH/RH:

WARNING: BEFORE YOU USE CHEMICALS, READ, UNDERSTAND, AND OBEY ALL SAFETY INSTRUCTIONS FOR THE CHEMICALS. THESE INSTRUCTIONS INCLUDE INSTRUCTIONS FROM THE MANUFACTURER, THE MATERIAL SAFETY DATA SHEET (MSDS), AND GOVERNMENT REGULATIONS. CHEMICALS CAN CAUSE INJURY TO YOU OR MAKE YOU SICK WHEN SAFETY INSTRUCTIONS ARE NOT OBEYED. AN MSDS GIVES INSTRUCTIONS ON HOW YOU MUST SAFELY USE, KEEP, AND DISCARD CHEMICALS. GET INSTRUCTIONS FROM YOUR EMPLOYER ON HOW YOU MUST SAFELY USE, KEEP, AND DISCARD CHEMICALS.

WARNING: PUT ON PROTECTIVE CLOTHING AND THE APPROVED HAND AND EYE PROTECTION WHEN YOU APPLY CHEMICALS. USE ONLY IN AN AREA WITH A GOOD SUPPLY OF AIR. BEFORE USE, READ THE APPLICABLE MATERIAL SAFETY DATA SHEET AND FOLLOW ALL SAFETY AND HEALTH PRECAUTIONS.

CAUTION: DO NOT LET THE SURFACE DRY BY SOLVENT EVAPORATION.

CAUTION: AFTER YOU HAVE CLEANED THE PART, WEAR CLEAN RUBBER GLOVES WHEN YOU TOUCH IT. IF YOU DO NOT WEAR CLEAN RUBBER GLOVES THIS CAN CAUSE CORROSION ON THE COMPONENTS.

CAUTION: MAKE SURE THAT DURING CLEANING NO LIQUIDS GO THROUGH THE HOLES INTO THE BOND ASSEMBLY. LIQUIDS, WHICH GO THROUGH THE HOLES WILL DAMAGE THE BOND ASSEMBLY.

CAUTION: USE ONLY SPECIFIED MATERIALS, OR THEIR EQUIVALENTS. THE SURFACE PROTECTION CAN BE DAMAGED IF DIFFERENT MATERIALS ARE USED.

- a. Clean the LIP SEALS FFTF 3 (3), (4) with a Textile - Lint free Cotton, moistened with Isopropyl Alcohol.
- b. Use a clean, dry Textile - Lint free Cotton and dry the LIP SEALS FFTF 3 (3), (4) before the Isopropyl Alcohol becomes gas.
- c. Adjustment of the LIP SEALS FFTF 3 (3), (4). Refer to **Figure 3**:
 - i. Put the LIP SEALS FFTF 3 (3), (4) to the TRACK FAIRING ASSY.
 - ii. Install the LIP SEALS FFTF 3 (3), (4) temporary to the TRACK FAIRING ASSY with the RETAINERS (190-92562-001), (190-92562-002), (190-92563-001), (190-92564-001), the SCREWS (PE21101-3-4TA), the WASHERS (NAS1149C0363R) and the NUTS (NAS1291C3M).
 - iii. Torque the SCREWS (PE21101-3-4TA) finger tight.
 - iv. Check and measure the fit of the LIP SEALS FFTF 3 (3), (4). Refer to **Figure 3**.
 - v. Mark the correct trim on the LIP SEALS FFTF 3 (3), (4) using a pen - felt. Obey the specified clearances (refer to **Figure 3**).
 - vi. Remove the LIP SEALS FFTF 3 (3), (4).
 - vii. Put the LIP SEALS FFTF 3 (3), (4) on a flat surface.
 - viii. Cut the seal on the marked surface with a knife - sharp.
 - ix. Check the fit of the trimmed LIP SEALS FFTF 3 (3), (4) by repeating steps 5.c.i - iv. Refer to **Figure 3**.
 - x. If the fit is satisfactory, continue with LIP SEAL installation (refer to 5.d).
 - xi. If the fit is not satisfactory:
 3. Repeat steps 4.c.v - ix if the trimmed LIP SEALS FFTF 3 (3), (4) are still within the specified clearances .Refer to **Figure 3**.

4. Replace the trimmed LIP SEALS FFTF 3 (3), (4) if they are not within the specified clearances. Refer to **Figure 3**.
- d. Install the LIP SEALS FFTF 3 (3), (4):
 - i. Put the LIP SEALS FFTF 3 (3), (4) in position on the TRACK FAIRING ASSY.
 - ii. Install the LIP SEALS FFTF 3 (3), (4) and the RETAINERS (190-92562-001), (190-92562-002), (190-92563-001), (190-92564-001) with the SCREWS (PE21101-3-4TA), the WASHERS (NAS1149C0363R) and the NUTS (NAS1291C3M).
 - iii. Torque the SCREWS (PE21101-3-4TA) to 1.7 to 3.4 Nm (15 to 30 lb.in) plus the drag torque of 0.23 to 1.5 Nm (2 to 13 lb.in).
6. Installation of the new Lip seal FFTF 4LH/RH:

WARNING: BEFORE YOU USE CHEMICALS, READ, UNDERSTAND, AND OBEY ALL SAFETY INSTRUCTIONS FOR THE CHEMICALS. THESE INSTRUCTIONS INCLUDE INSTRUCTIONS FROM THE MANUFACTURER, THE MATERIAL SAFETY DATA SHEET (MSDS), AND GOVERNMENT REGULATIONS. CHEMICALS CAN CAUSE INJURY TO YOU OR MAKE YOU SICK WHEN SAFETY INSTRUCTIONS ARE NOT OBEYED. AN MSDS GIVES INSTRUCTIONS ON HOW YOU MUST SAFELY USE, KEEP, AND DISCARD CHEMICALS. GET INSTRUCTIONS FROM YOUR EMPLOYER ON HOW YOU MUST SAFELY USE, KEEP, AND DISCARD CHEMICALS.

WARNING: PUT ON PROTECTIVE CLOTHING AND THE APPROVED HAND AND EYE PROTECTION WHEN YOU APPLY CHEMICALS. USE ONLY IN AN AREA WITH A GOOD SUPPLY OF AIR. BEFORE USE, READ THE APPLICABLE MATERIAL SAFETY DATA SHEET AND FOLLOW ALL SAFETY AND HEALTH PRECAUTIONS.

CAUTION: DO NOT LET THE SURFACE DRY BY SOLVENT EVAPORATION.

CAUTION: AFTER YOU HAVE CLEANED THE PART, WEAR CLEAN RUBBER GLOVES WHEN YOU TOUCH IT. IF YOU DO NOT WEAR CLEAN RUBBER GLOVES THIS CAN CAUSE CORROSION ON THE COMPONENTS.

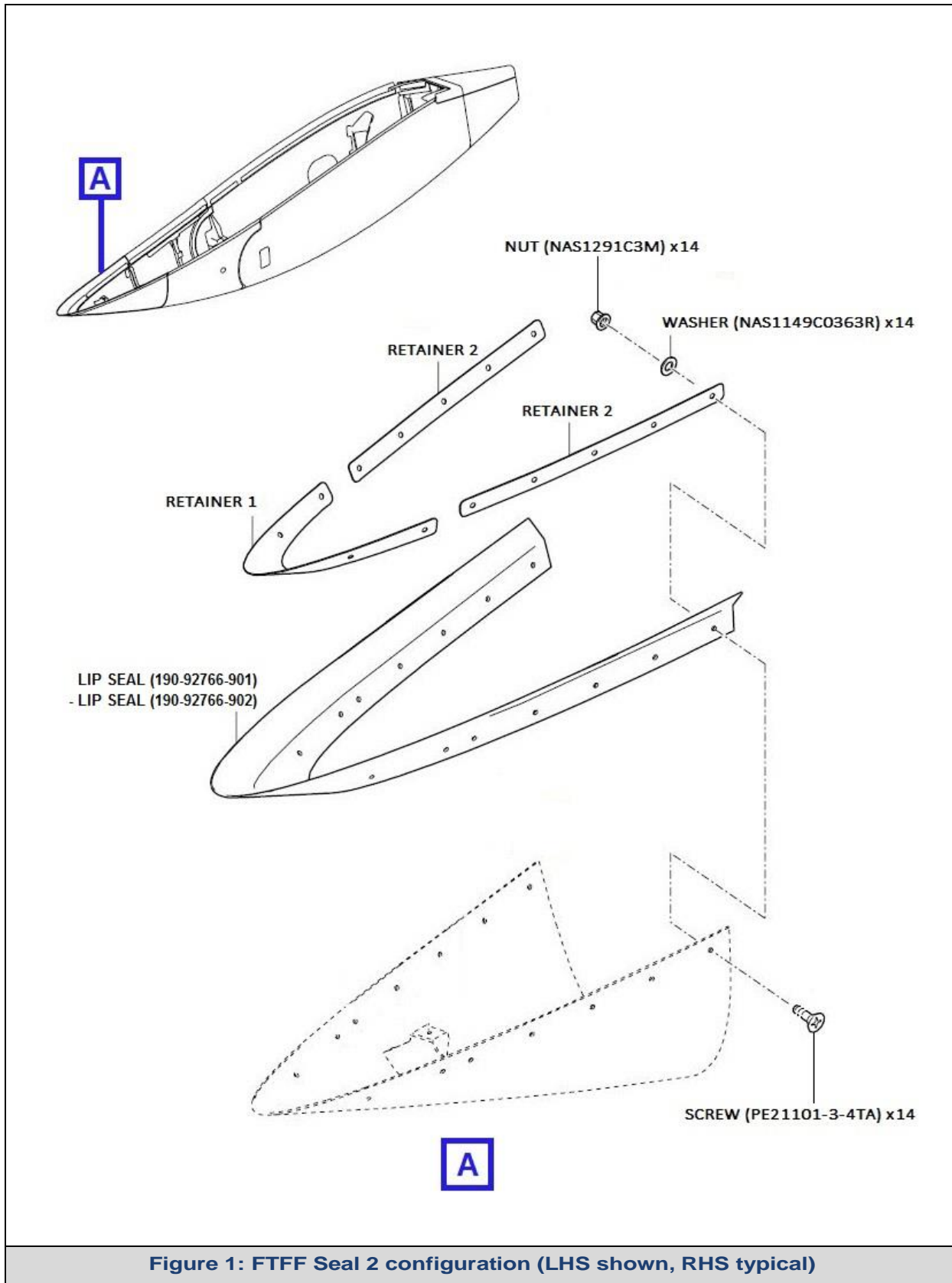
CAUTION: MAKE SURE THAT DURING CLEANING NO LIQUIDS GO THROUGH THE HOLES INTO THE BOND ASSEMBLY. LIQUIDS, WHICH GO THROUGH THE HOLES WILL DAMAGE THE BOND ASSEMBLY.

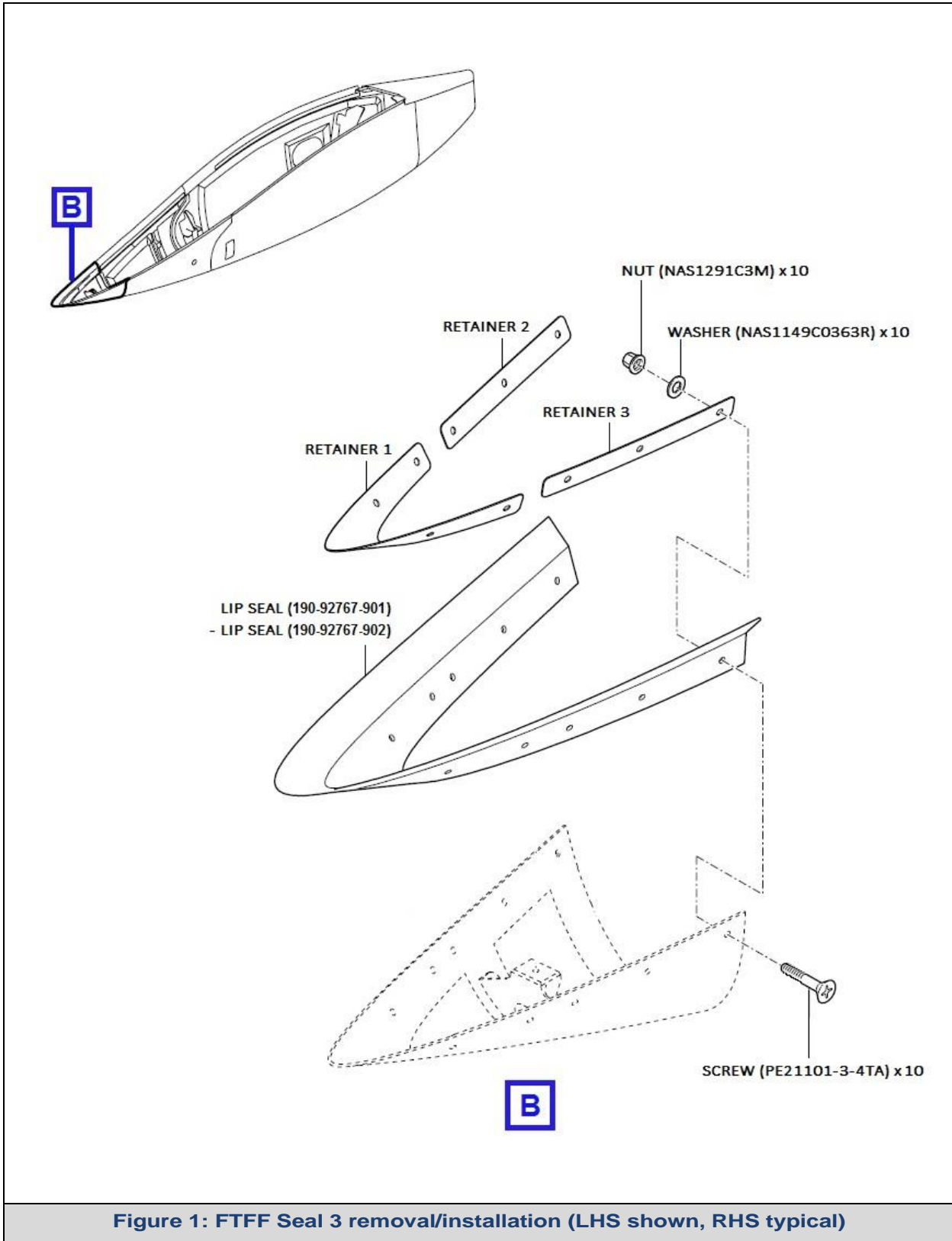
CAUTION: USE ONLY SPECIFIED MATERIALS, OR THEIR EQUIVALENTS. THE SURFACE PROTECTION CAN BE DAMAGED IF DIFFERENT MATERIALS ARE USED.

 - a. Clean the LIP SEALS FFTF 4 (5), (6) with a Textile - Lint free Cotton, moistened with Isopropyl Alcohol.

- b. Use a clean, dry Textile - Lint free Cotton and dry the LIP SEALS FFTF 4 (5), (6) before the Isopropyl Alcohol becomes gas.
- c. Adjustment of the LIP SEALS FFTF 4 (5), (6). Refer to **Figure 3**:
 - i. Put the LIP SEALS FFTF 4 (5), (6) to the TRACK FAIRING ASSY.
 - ii. Install the LIP SEALS FFTF 4 (5), (6) temporary to the TRACK FAIRING ASSY with the RETAINERS (190-92627-001), (190-92627-002), (190-92628-001), the SCREWS (PE21101-3-4TA), the WASHERS (NAS1149C0363R) and the NUTS (NAS1291C3M).
 - iii. Torque the SCREWS (PE21101-3-4TA) finger tight.
 - iv. Check and measure the fit of the LIP SEALS FFTF 4 (5), (6). Refer to **Figure 3**.
 - v. Mark the correct trim on the LIP SEALS FFTF 4 (5), (6) using a pen - felt. Obey the specified clearances (refer to **Figure 3**).
 - vi. Remove the LIP SEALS FFTF 4 (5), (6).
 - vii. Put the LIP SEALS FFTF 4 (5), (6) on a flat surface.
 - viii. Cut the seal on the marked surface with a knife - sharp.
 - ix. Check the fit of the trimmed LIP SEALS FFTF 4 (5), (6) by repeating steps 6.c.i - iv. Refer to **Figure 3**.
 - x. If the fit is satisfactory, continue with LIP SEAL installation (refer to 6.d).
 - xi. If the fit is not satisfactory:
 - 5. Repeat steps 4.c.v - ix if the trimmed LIP SEALS FFTF 4 (5), (6) are still within the specified clearances .Refer to **Figure 3**.
 - 6. Replace the trimmed LIP SEALS FFTF 4 (5), (6) if they are not within the specified clearances. Refer to **Figure 3**.
- d. Install the LIP SEALS FFTF 4 (5), (6):
 - i. Put the LIP SEALS FFTF 4 (5), (6) in position on the TRACK FAIRING ASSY.
 - ii. Install the LIP SEALS FFTF 4 (5), (6) and the RETAINERS (190-92627-001), (190-92627-002), (190-92628-001) with the SCREWS (PE21101-3-4TA), the WASHERS (NAS1149C0363R) and the NUTS (NAS1291C3M).
 - iii. Torque the SCREWS (PE21101-3-4TA) to 1.7 to 3.4 Nm (15 to 30 lb.in) plus the drag torque of 0.23 to 1.5 Nm (2 to 13 lb.in).

PRE-MOD CONFIGURATION





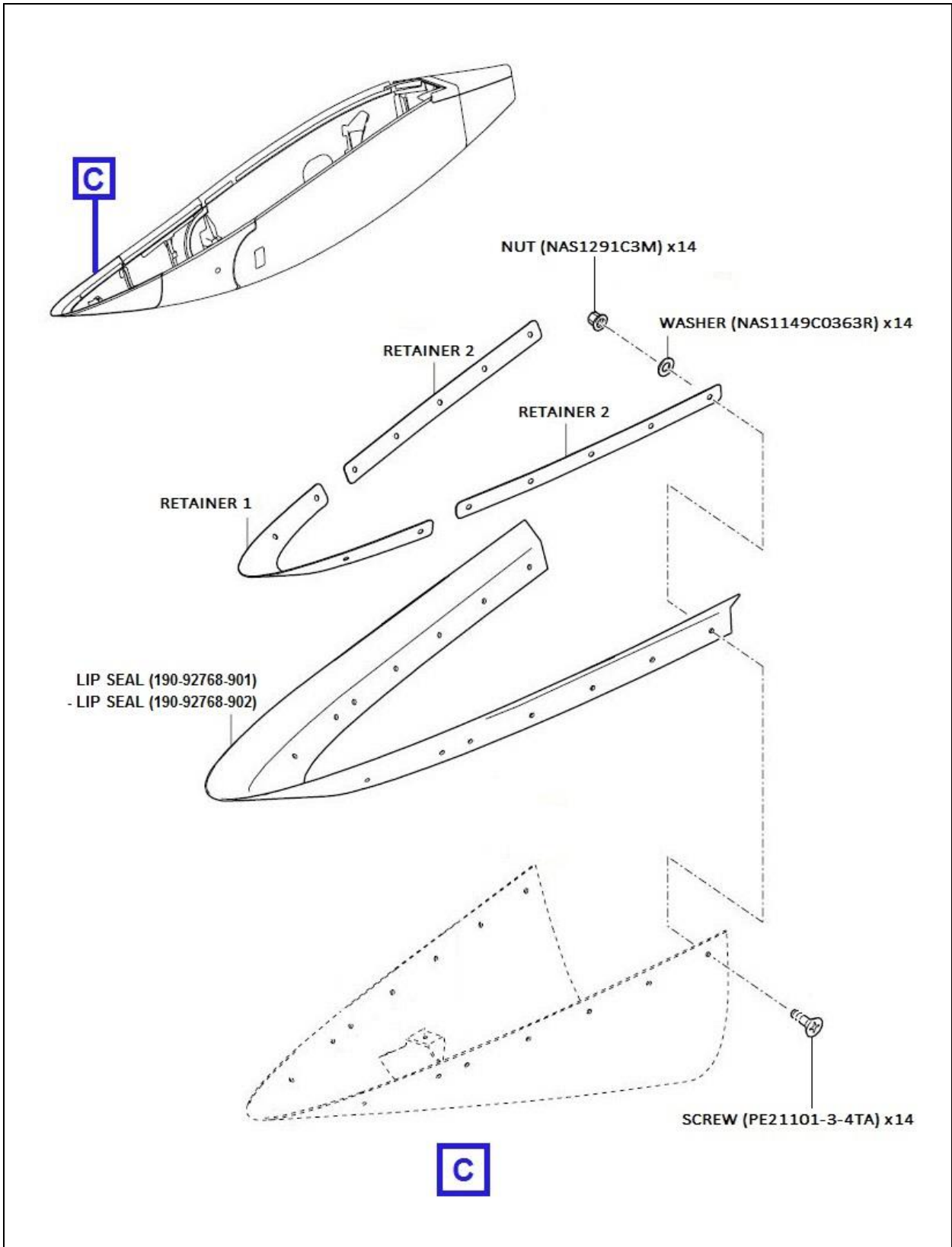
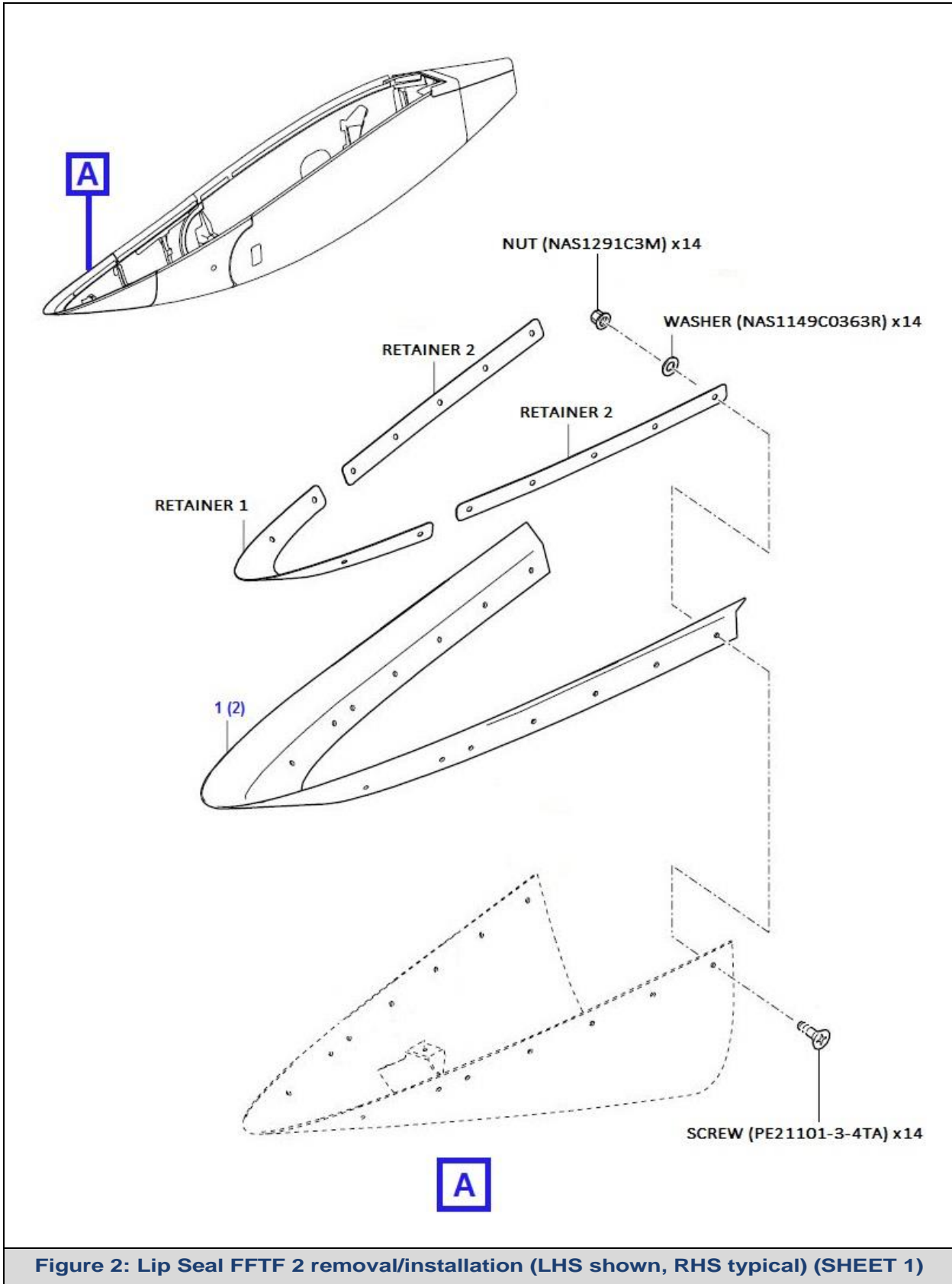
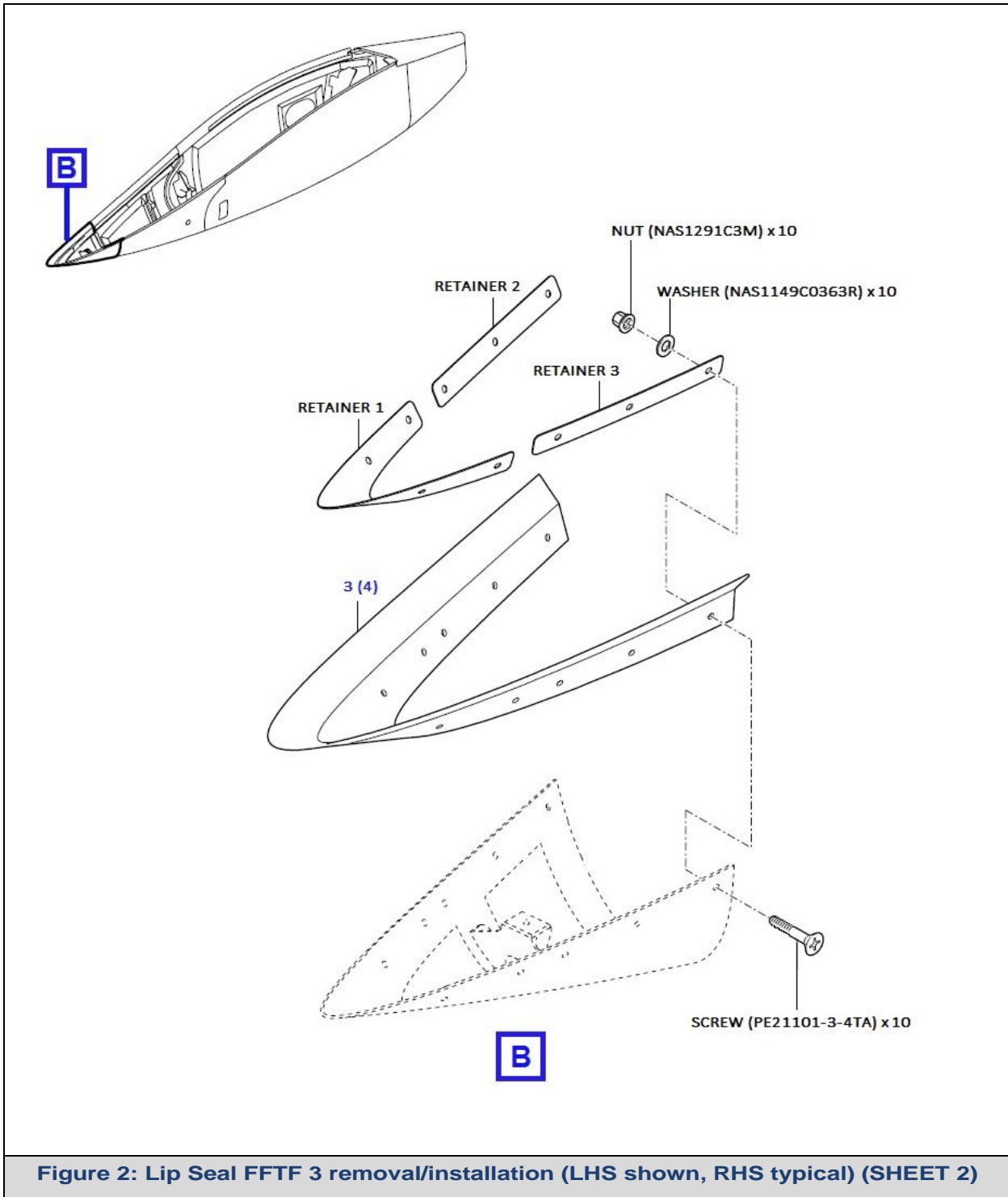
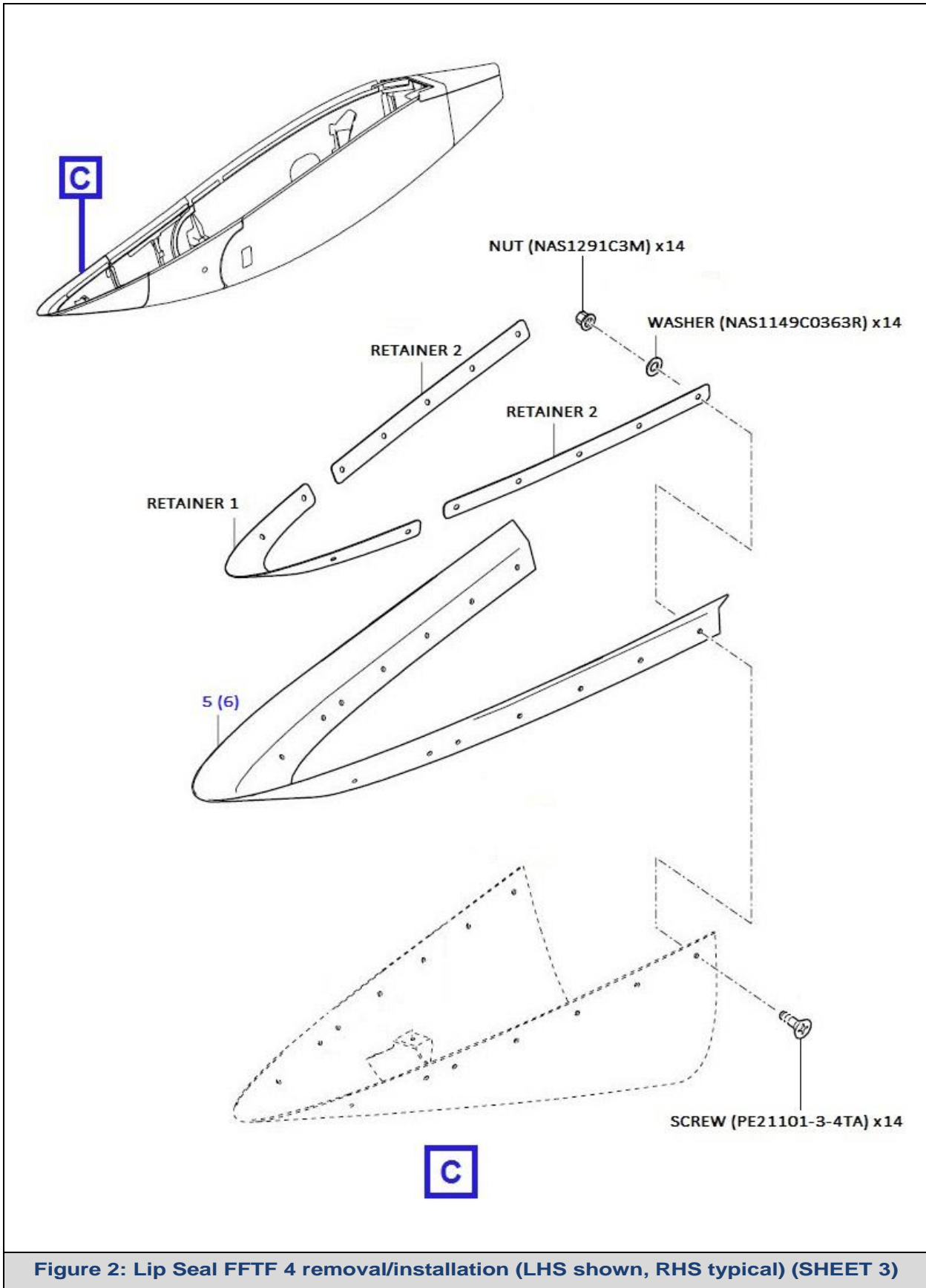


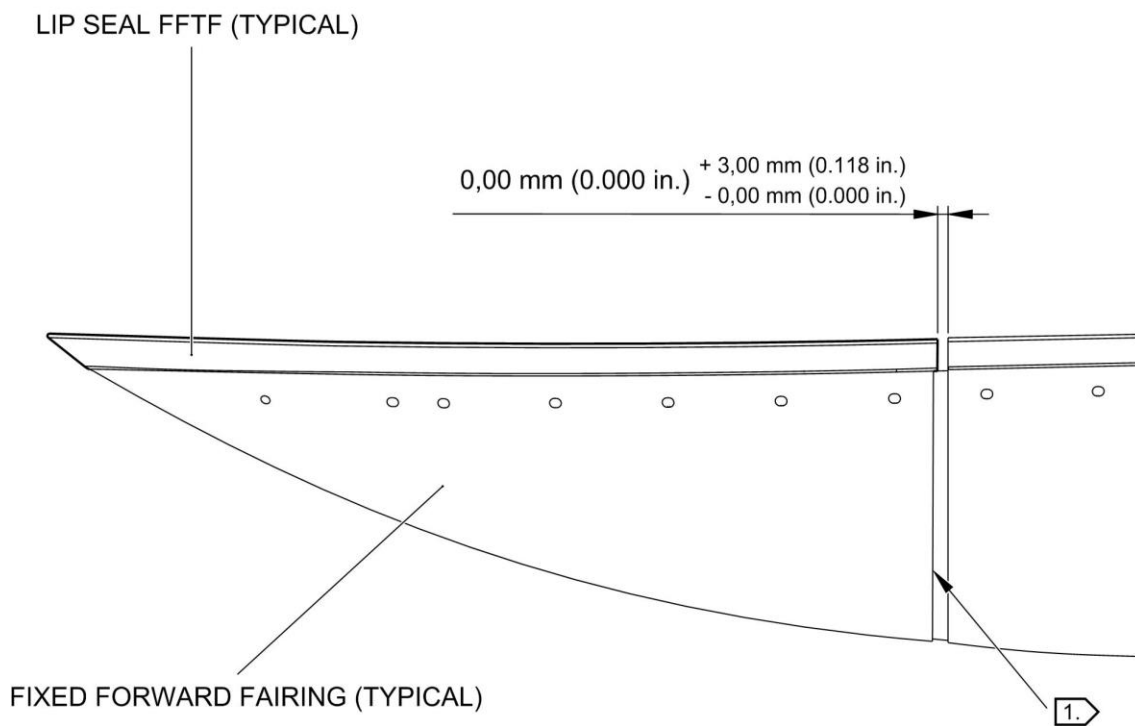
Figure 1: FTFF Seal 4 removal/installation (LHS shown, RHS typical)

POST-MOD CONFIGURATION









1. LIP SEAL IS NOT ALLOWED TO BE SHORTER THAN THE FAIRING REAR EDGE CONTOUR AFTER TRIMMING

Figure 3: Adjustment of the Lip Seals FFTF (typical)